

# SecuRope lifeline in an overhead configuration

**FALLPROTEC**

December 2019

## Description

The SecuRope NEO is a lifeline that can be used in overhead configuration. This configuration is recommended for industrial buildings where the fall clearance is limited.



Compliant with EN795:2012  
Type C and CEN/TS16415:2013  
MADE IN EU



x 4

## Advantages

- Intuitive use
- Comfortable and smooth moving of the glider
- Can be used with retractable fall arresters
- Reduced cable deflection (max 70cm)
- Non deformable components
- Robust and lasting stainless steel material

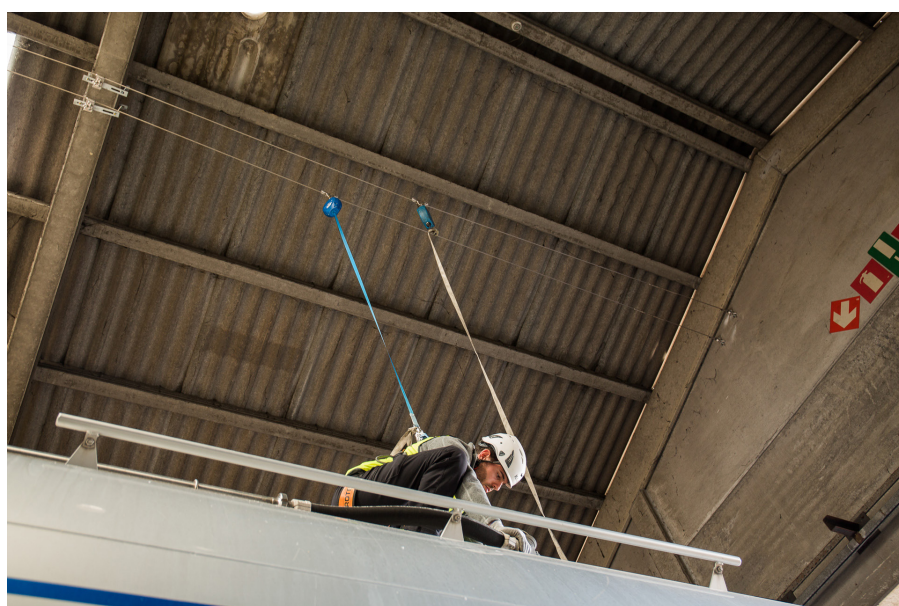
## Technical specifications

Delivered with an installer and user manual

Material: Stainless Steel SS316 & SS304

Maximum span 12m between the anchors

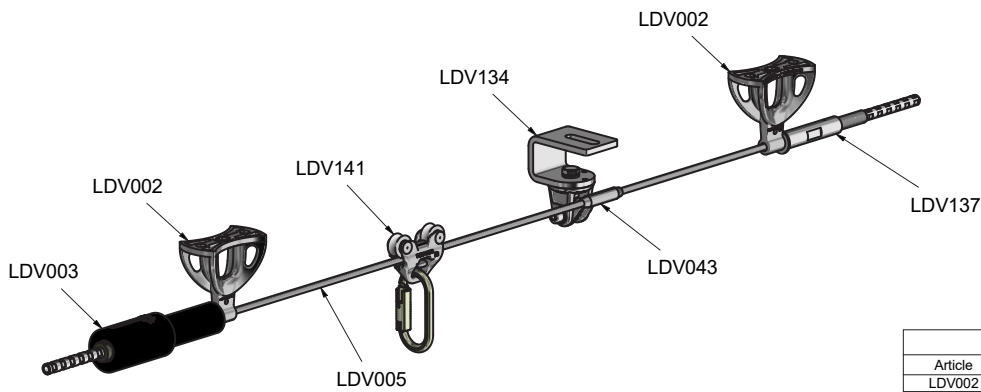
Loading on the anchors max 12KN



Securope  
overhead for  
loading trucks

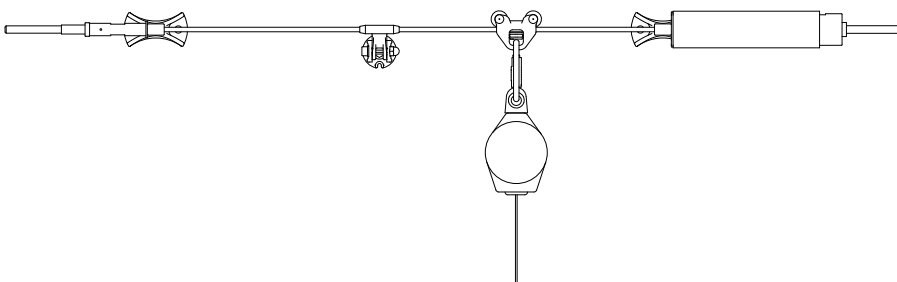
# SecuRope lifeline in an overhead configuration

## Main components of Securope overhead

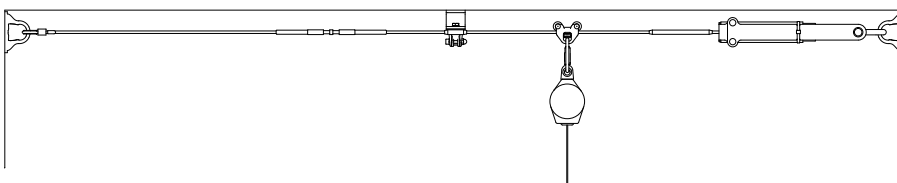


Overhead Life Line	
Article	Description
LDV002	End Anchor 2012
LDV003	Energy absorber assembly
LDV005	Cable 8 mm stainless steel 1x19
LDV043	NEO Intermediate Anchor
LDV133	Glider with Roller
LDV137	Line tensioner

## End anchors between walls



Intermediate bracket on wall



Intermediate bracket on ceiling

---

## SecuRope lifeline in an overhead configuration

---



---

# FALLPROTEC

---

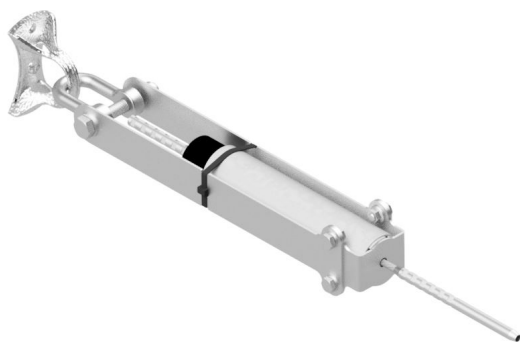
December 2019

---

### LDV054

End anchor, wall fixing fitted with a crimping ring and a turnbuckle.

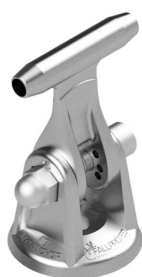
---



### LDV139

End anchor for fixing on wall including energy absorber and crimping ring

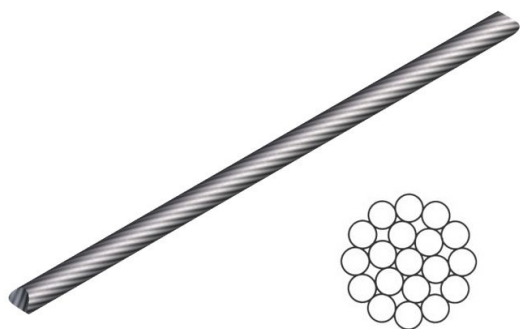
---



### LDV043

The NEO anchor has an orientable cable guide. It can be installed on wall and ceiling.

---



### LDV005

Cable Ø 8 mm construction 1x19 SS316

---

---

# SecuRope lifeline in an overhead configuration

---

---

**FALLPROTEC**

---

December 2019

---

## Gliders

Two models of gliders are available:

- **LDV060** when the height between the cable and the user is less than 2,5m
- **LDV141** if the height between the cable and the user is greater than 2,5m and a retractable fall arrester is suspended to the glider



---

### LDV060

Captive glider with carabiner

---



---

### LDV141

Glider for overhead configurations with retractable

---