

## New Product Information

Unipost means « Universal post », it may be installed on several types of roofing, hot deck, cold deck, wood deck, prefabricated slab, concrete slab, thanks to the fixing interface.

The life line is the Securope model.

The installer keeps in stock one type only of post and 3 types of fixings: self-drilling screws, mechanical or chemical anchors M10 and toggle bolts M10. The advantage is undeniable, reduction of components in stock and simplification of rigging on site.

The “Unipost” is available in two heights, 600 and 800 mm. The Unipost protects the roofing from possible damages, when stopping a fall, thanks to an energy absorbing device located at the foot of the post, only the post tube deforms and not the fixing interface.

After stopping a fall, simply replace the tube, the fixing interface plate remaining in place on the roof.

The Unipost is made of materials with high resistance to corrosive agents; it can be installed on sea side.

The lifeline installed on Uniposts has been tested by a notify body certificate number 18.0516/A.



Compliant with EN795:2012  
CEN/TS16415:2013  
MADE IN EU



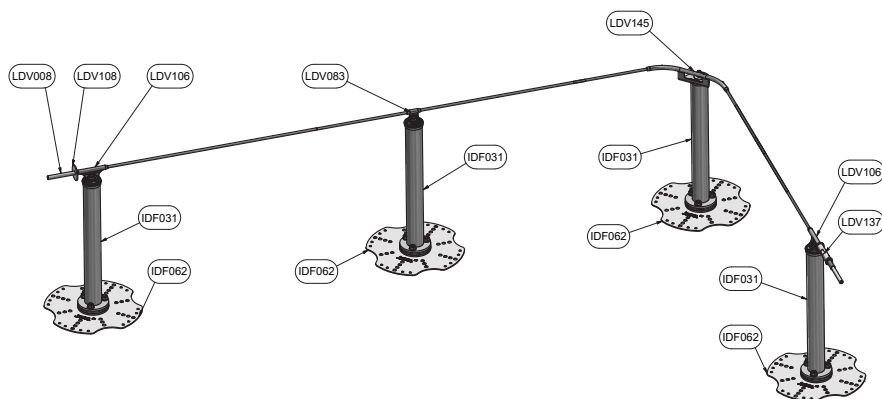
## Unipost with its fixing assembly



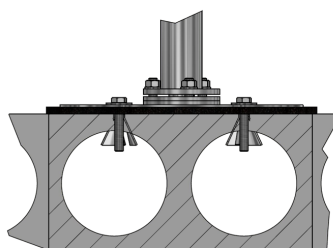
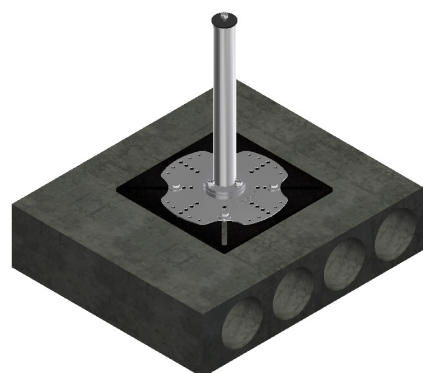
# Securope for Unipost lifeline

**FALLPROTEC**

March 2020



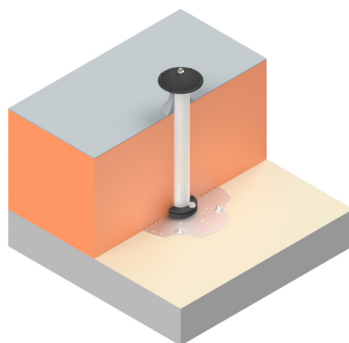
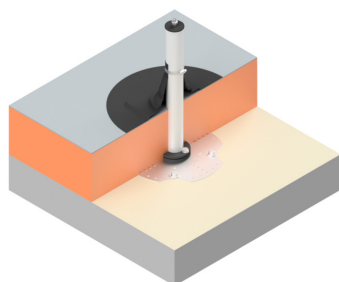
## Securope lifeline on Unipost



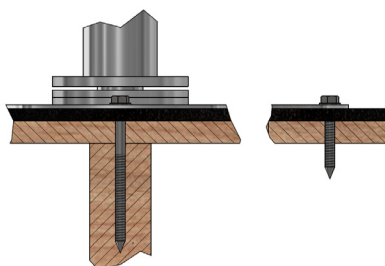
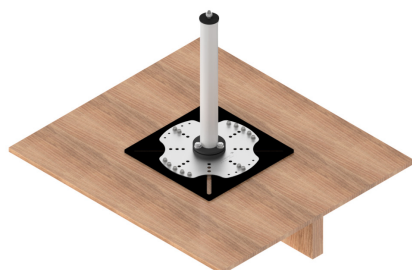
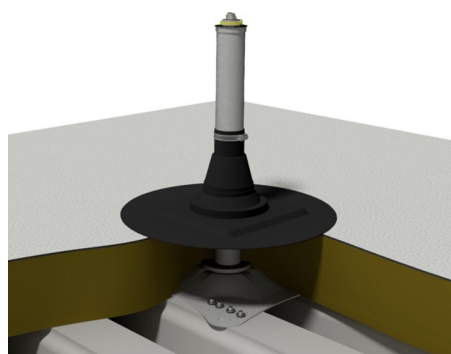
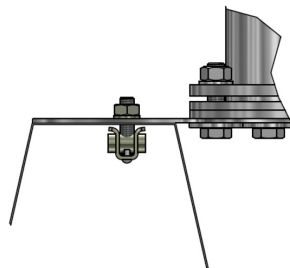
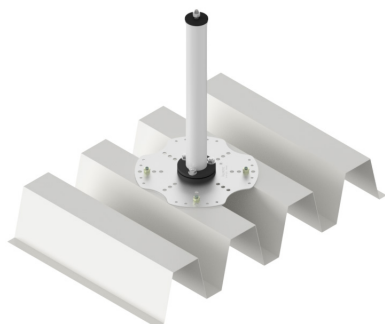
## Installation on hollow concrete slab

The Uniposts are installed on concrete slab thanks to 4 mechanical or chemical anchors M10.

The waterproofing of the Unipost is done by raising the bituminous waterproofing along the post or by a felt roof seal on bituminous or PVC membrane.



## Securope for Unipost lifeline



## FALLPROTEC

March 2020

### Installation on cold deck

The Uniposts are installed on cold deck thanks to 16 self-drilling screws.

### Installation on hot deck

The Uniposts are installed on hot deck, once the trapezoidal metal sheet is fixed on the purlins and before installation of the insulation and the waterproofing membrane.

### Installation on wooden panel

The post is secured to the wooden panel by using a wood screw.

## Securope lifeline on Unipost

- IDF058 Unipost 600mm fitted with fixing interface metal plate
- IDF059 Unipost 800mm fitted with fixing interface metal plate
- LDV106 TEVO terminal anchor
- LDV108 Fix end stop
- LDV008 Crimping ring 100mm
- LDV222-500 Cable  $\Phi$  8mm coil of 500m
- LDV083 EVO intermediate anchor
- LDV096 Corner plate
- LDV011 Crimping ring 30mm
- LDV137 Line tensioner