

FALLPROTEC

Height Safety Products

+352 26 55 09 30 | www.fallprotec.com

FALLPROTEC SECURAIL PRO HORIZONTAL





RAIL LIFELINE FOR FALLARREST, FALL RESTRAINT AND ABSEILING

EN795:2012 & TS16415:2013
ASSP/ASSE Z359.6
OSHA 1910 / OSHA1926
CSA Z259.16



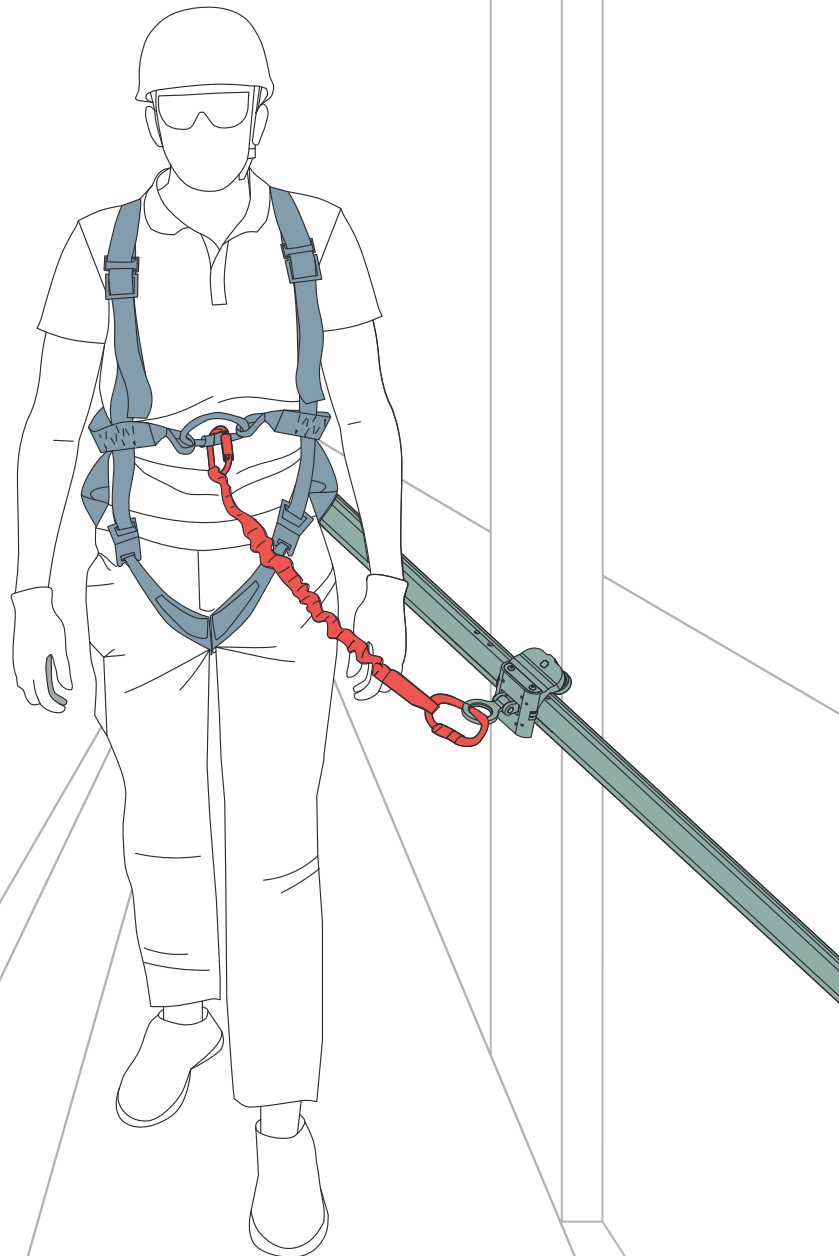
The Fallprotec Securail Pro is a horizontal safety line that is both rigid and highly versatile.

It is lightweight and has very high inertia which allows a large span between brackets. As such, it is recommended for complex structures that have irregular fixing options.

Install easily on all types of structures

The Securail Pro lifeline has been tested and certified according to European standards.

- Up to 2 users between brackets
- Span up to 6m (19'8")
- 1,7 kg/m (1,14lbs/ft)
- Low deflection
- Anodized aluminium
- Absorbs dilatation / contraction
- Versatile rail: same elements for ground, wall or ceiling
- Special trolley adapted to inclined rails
- Possibility of custom-made solutions with the Fallprotec's engineering department



Applications:



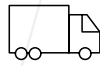
Housing



Industry



Vertical structures



Loading bays



Fall arrest



Fall restraint



Abseiling

Securail Pro for fall arrest and fall restraint

The Securail Pro is a rigid and versatile fall arrest rail.

The profile is used as fall arrest on ground, wall and ceiling as well as for works in restraint on slopes between 15° and 60° thanks to its special trolleys. Its low deflection allow to use it for situations with little fall clearance.

EN795:2012 & TS16415:2013

ASSP/ASSE Z359.6

OSHA 1910 / OSHA1926

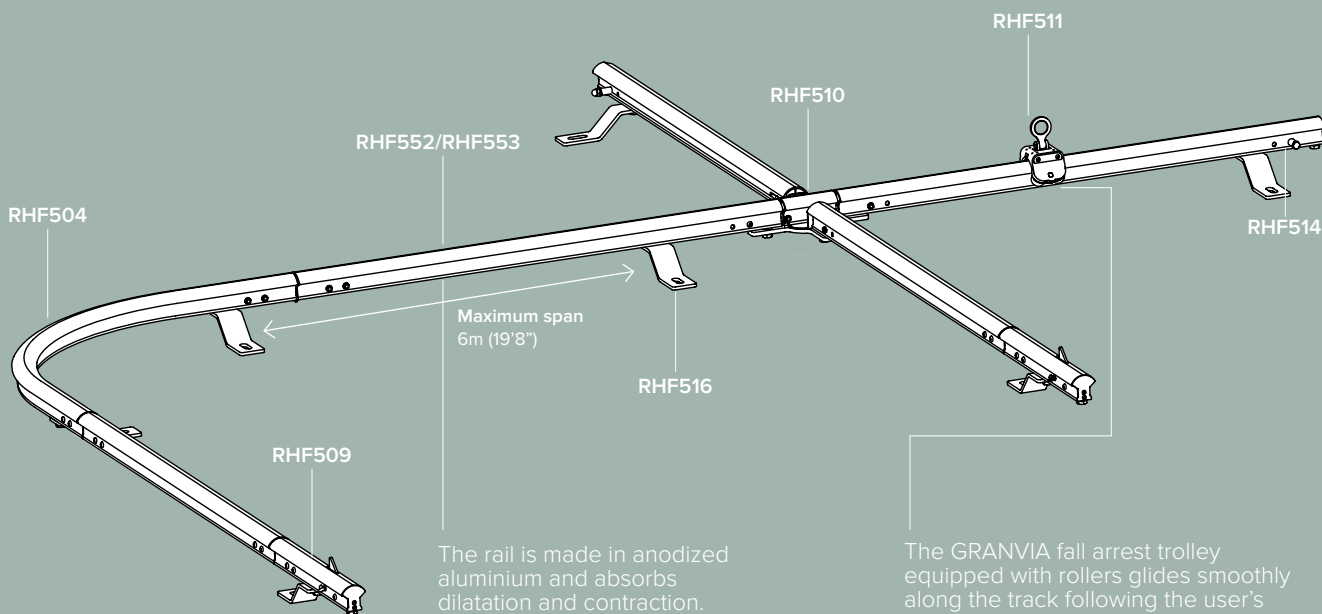
CSA Z259.16



x 2



Click here to follow the product YouTube playlist



Trolley Granvia and overspeed trolley

The Granvia and the overspeed trolley are designed to enable fall arrest with the Securail Pro in horizontal configurations.



Trolley Granvia

The GRANVIA fall arrest trolley equipped with rollers glides smoothly along the track following the user's movement.

Anti-derailment claws mounted between the rollers prevent the trolley from disconnecting from the rail, in the event of a fall.

The same trolley can be used whether the rail is installed on ground, wall or ceiling.

RHF511



Overspeed trolley

This trolley works for inclined and horizontal lifelines. The trolley can be used in both directions and locks in case of a fall as the trolley detects overspeed.

The overspeed trolley is efficient on slopes up to 60°.

This allows the assembly of horizontal lifelines with inclined span, all in one, without any user disconnection.

RHF554



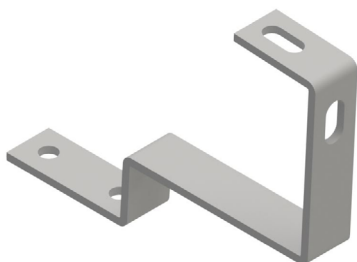
Possibility to mount the rail on any type of structure



Tile and slate roof

The SAFE U product range is specifically designed for common roofs such as tile, slate, cold deck and standing seam roofs.

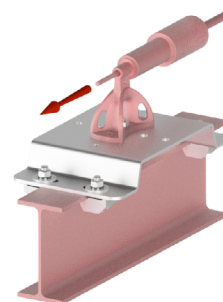
This fixing assembly is designed to guarantee waterproofness.



Steel beams

Clamped posts on steel beam for ceiling or wall. Standard fixing assemblies with clamps or counterplates.

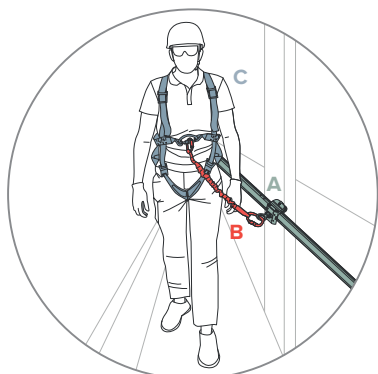
For special sizes and projects, the engineer's department can design custom brackets.



Possibility to mount the rail on any type of structure

<div data-bbox="159 414 242 477" data-label="Image"> </div> <div data-bbox="252 432 375 465" data-label="Section-Header"> <h2>Concrete</h2> </div> <div data-bbox="153 510 496 580" data-label="Text"> <p>The rigid post IDF018 is fixed on concrete or rigid steel beams</p> </div> <div data-bbox="153 609 236 642" data-label="Text"> <p>IDF018</p> </div> <div data-bbox="308 663 628 936" data-label="Image"> <p>500mm 19.6" 12kN 2645 lbf</p> </div>	<div data-bbox="821 414 904 477" data-label="Image"> </div> <div data-bbox="928 432 1053 465" data-label="Section-Header"> <h2>Hot deck</h2> </div> <div data-bbox="817 510 1393 613" data-label="Text"> <p>On Multipost or SpotAnchor. Both are fixed by a reinforced toggle bolt. This allows a distribution of forces on a large surface.</p> </div> <div data-bbox="831 663 1090 846" data-label="Image"> </div> <div data-bbox="857 875 1056 940" data-label="Caption"> <p>IDF022 Multipost with PVC isolation</p> </div> <div data-bbox="1153 651 1412 853" data-label="Image"> </div> <div data-bbox="1161 875 1412 940" data-label="Caption"> <p>LDV092 SpotAnchor with bitumen isolation</p> </div>
<div data-bbox="159 1046 242 1108" data-label="Image"> </div> <div data-bbox="252 1059 391 1093" data-label="Section-Header"> <h2>Cold deck</h2> </div> <div data-bbox="153 1151 606 1218" data-label="Text"> <p>Delivered with sealing tape to limit thermal bridges and ensure waterproofness.</p> </div> <div data-bbox="153 1344 252 1375" data-label="Text"> <p>RHF527</p> </div> <div data-bbox="261 1352 649 1585" data-label="Image"> </div>	<div data-bbox="821 1046 904 1108" data-label="Image"> </div> <div data-bbox="922 1055 1133 1090" data-label="Section-Header"> <h2>Standing seam</h2> </div> <div data-bbox="817 1144 1383 1308" data-label="Text"> <p>Its special design and clamp system absorbs the roof's dilatation and contraction movements. Adjustable to all seam intervals. Exists with several clamp types to match all standing seams.</p> </div> <div data-bbox="817 1344 917 1375" data-label="Text"> <p>RHF528</p> </div> <div data-bbox="975 1402 1273 1601" data-label="Image"> </div>

Mounting equipment



A

Anchorage

Structure capable of supporting a fall arrest situation or an abseiling activity.

Fallprotec lifeline systems:

The SecuRail Pro Lifeline is suitable for intensive use in complex environments. All components are in stainless steel for greater durability.

Fixing brackets:

Fallprotec has designed an entire range of fixing assemblies suitable for host structure types. The internal engineering department of Fallprotec also offers bespoke fixation assemblies on demand.

B

Connecting Devices

PPE Equipment connecting the operator to the system, restraining them in case of a fall. The PPE are designed to limit the energy transmitted to the user to a maximum of 6KN.

Fallprotec PPE:

RHF511: Trolley usable for ground, wall and ceiling configuration for fall arrest.

RHF530: Overspeed trolley usable for inclined lifelines or horizontal lifelines.

RHF530: Trolley equipped with a brake for abseiling works. Always used in combination with a RHF511 trolley for the secondary rope.

Fallprotec PPE:

Self retractable lanyard

IHWS



👤 x 1 KG 3,70 LBS 8,15

With aluminium casing and galva steel rope.

C

Body Support

A safety harness is a personal protective equipment (PPE) that is designed to catch a person in the event of a fall. Our Prolight harness diffuses fall arrest energy across the shoulders, thighs and pelvis.

Fallprotec PPE:

Harness Prolight

HAR001 / 002 / 003



EN361:2012

👤 x 1 KG 0,93 LBS 2,05

Resistant, lightweight fabric. Comfortable for the user.

Single lanyard 2 m

HAR010



EN354/355/362

👤 x 1 KG 0,50 LBS 1,1 ↔ 2m 78,7"

0 x 2 20mm opening Zinc plated steel

With energy absorber and 2 twist lock carabiners opening 20mm

Fallprotec's Securail Pro horizontal worldwide

Click here to view more
case studies worldwide
on our website



CHOOSING FALLPROTEC MEANS

- One reference for global assistance
- Certified by notifying bodies as per latest European standard
- Quality control: ISO9001:2015.
E.C. Quality of Production « Article 11B »
- Product liability insurance
- Warranty
- One-Stop-Shop



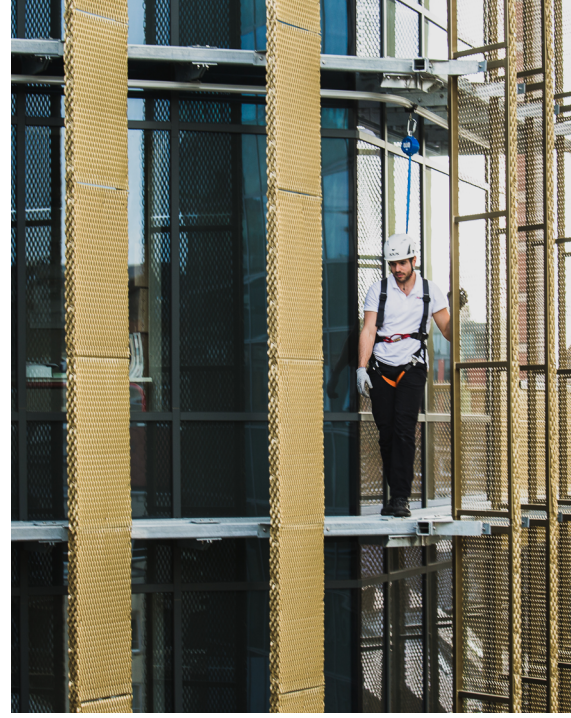
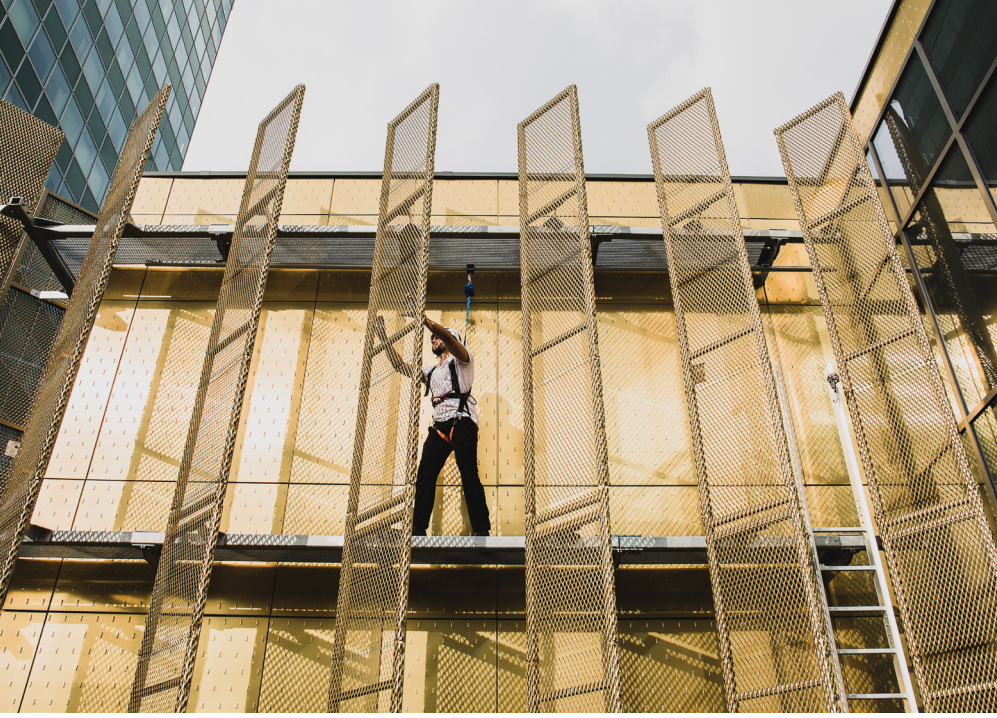
📍 Cathedral
Clermont-Ferrand, France



📍 Train station
Limoges, France



📍 Facade maintenance
Charleroi, Belgium



📍 Maintenance of a school roof
Toulouse, France



📍 Highway maintenance
Madrid, Spain



📍 Aircraft maintenance
Frankfurt, Germany



FALLPROTEC SA

ZARO 2-4 Rue Gustave

Loosé,

8346 Grass

Luxembourg

T: +352 26 55 09 30

F: +352 26 55 09 30 55

marketing@fallprotec.com

FALLPROTEC SL

Eduard Calvet i Pintó 4

Pol. Ind. Vallmorena

08339 Vilassar de Dalt

España

T: +34 93 114 22 31

info@fallprotec.es

+352 26 55 09 30

www.fallprotec.com

Follow us

fallprotec



FALLPROTEC

Height Safety Products

