

Climbing SafeAccess

SafeAccess grim pant
SafeAccess para ascenso
SafeAccess climbing

Code N°MHS040 / MHS041 / MHS042 / MHS047 / MHS065 / MHS079

FALLPROTEC

March 2018

Description

The Climbing SafeAccess rail is installed to access sloped facades or atriums for the maintenance and cleaning of the building.

A high resistance stainless steel chain is inserted through the bottom channel of the rail. The climbing trolley with pinion can climb slopes up to 70°. It uses a chain based design, the most reliable system for installations with an important slope.

Advantages

- Active drive system
- Slopes up to 70°
- Span of 3m between supports
- Compatible with rope access technician, RopeClimber and cradles
- Bespoke solutions by the Fallprotec engineering department



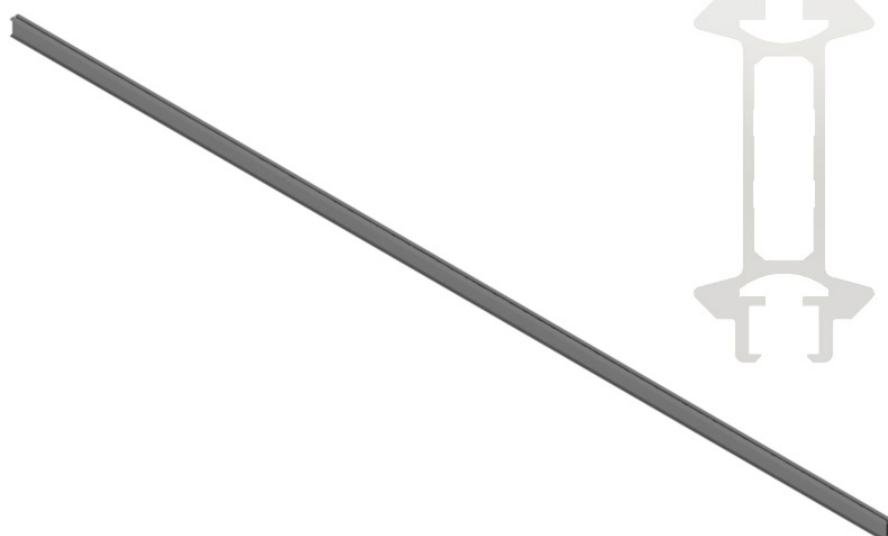
Compliant with EN 1808:2015
Made in EU



Technical specifications

Delivered with an installer and user manual

Material : aluminium 6060T6 in grey powder coating



MHS050 rail

Fastened to the building with bespoke brackets, adapting easily to the architecture

KG 5,676 Kg

Climbing SafeAccess

SafeAccess grim pant
SafeAccess para ascenso
SafeAccess climbing

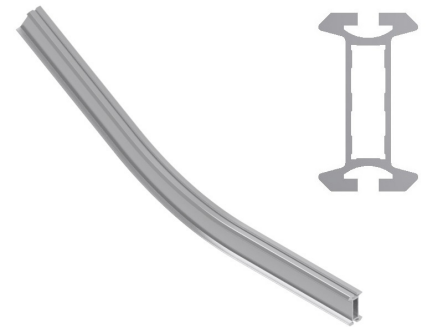
Code N°MHS040 / MHS041 / MHS042 / MHS047 / MHS065 / MHS079

MHS065

SafeAccess curve for transitionning from horizontal to inclined

FALLPROTEC

March 2018



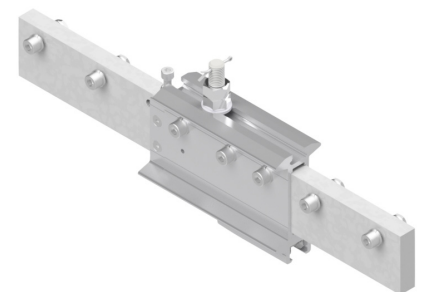
MHS042

Chain for climbing SafeAccess



MHS041

System for fixing and tensionning the chain



NAV 6 - Motorized climbing trolley

Possibility to have battery powered solutions

